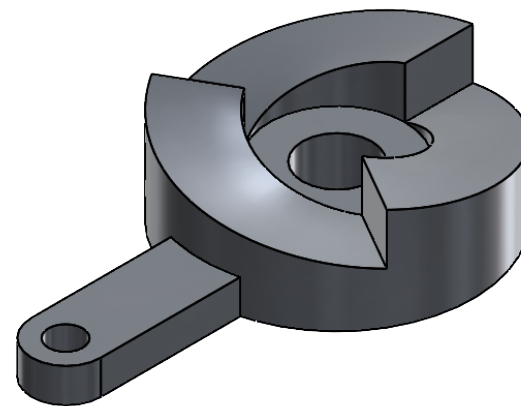
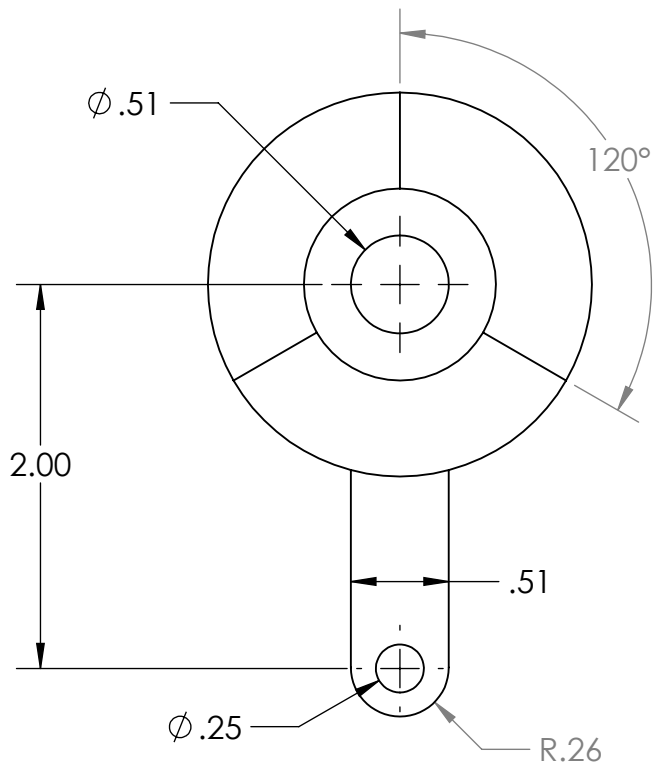


2

1

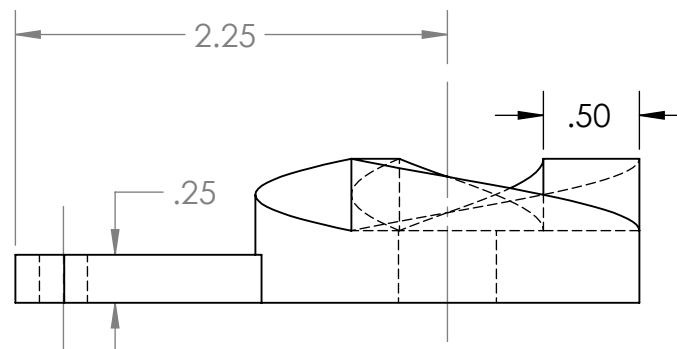
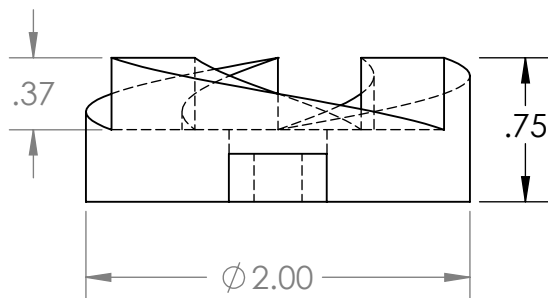
B

B



A

A



UNLESS OTHERWISE SPECIFIED:
 DIMENSIONS ARE IN INCHES
 TOLERANCES:
 TWO PLACE DECIMAL ± 0.05
 ANGULAR: MACH $\pm 1^\circ$ BEND $\pm 1^\circ$

MATERIAL

PLA

	NAME	DATE
DRAWN	HPVCP	10/23/21
ADVISOR'S APPROVAL		
COMMENTS:		

TITLE:

BOTTOM JAW/LEVER

SIZE	DWG. NO.	REV
------	----------	-----

A	P.1 Bottom Jaw	
----------	-----------------------	--

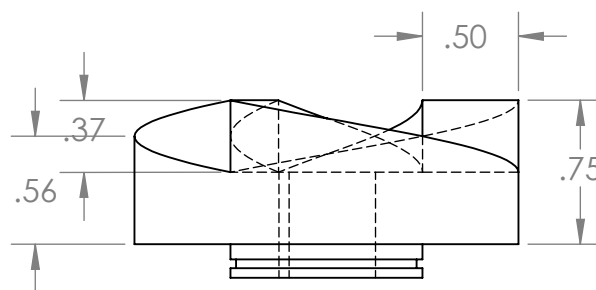
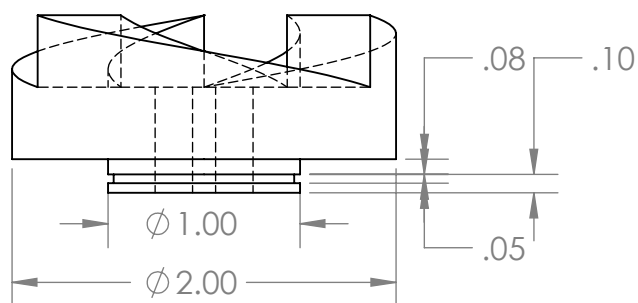
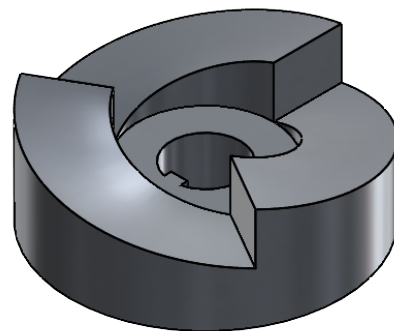
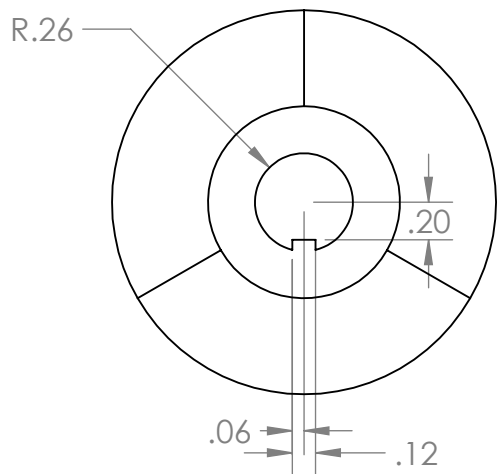
SCALE: 1:1	WEIGHT:	SHEET 1 OF 16
------------	---------	---------------

2

1

2

1



UNLESS OTHERWISE SPECIFIED:
 DIMENSIONS ARE IN INCHES
 TOLERANCES:
 TWO PLACE DECIMAL ± 0.05
 ANGULAR: MACH $\pm 1^\circ$ BEND $\pm 1^\circ$

MATERIAL
 PLA

DRAWN		NAME	DATE	TITLE:	
ADVISOR'S APPROVAL		HPVCP	10/23/21	TOP JAW	
COMMENTS:				SIZE	DWG. NO.
				A	P.2 Top Jaw
SCALE: 1:1		WEIGHT:		REV	
				SHEET 2 OF 16	

2

1

B

B

A

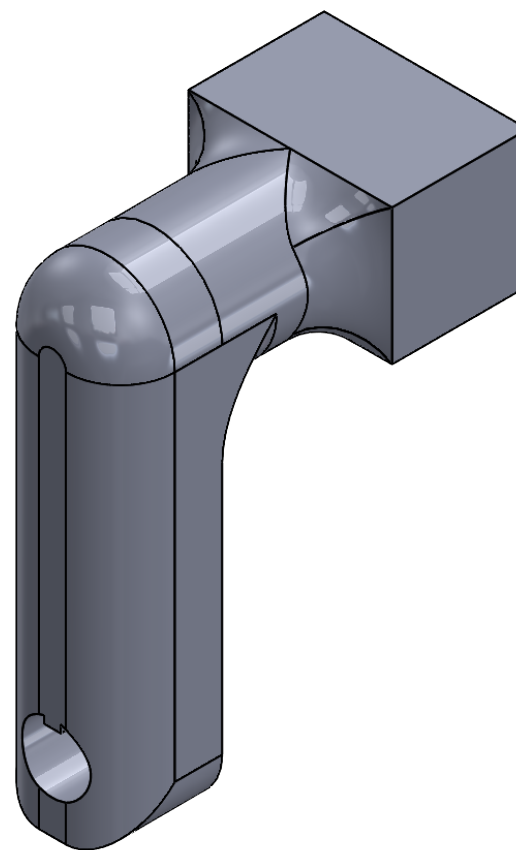
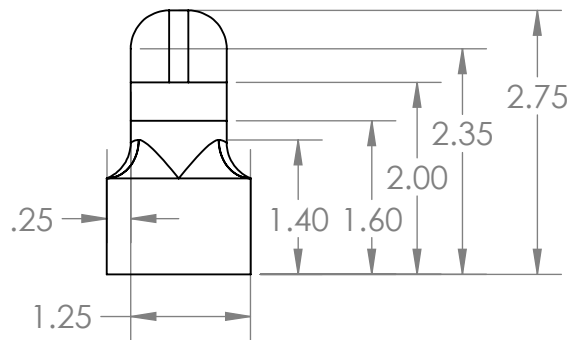
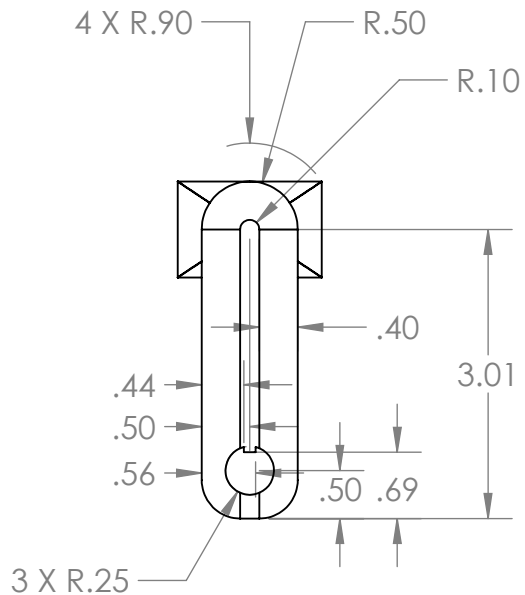
A

2

1

B

B



A

A

UNLESS OTHERWISE SPECIFIED:
 DIMENSIONS ARE IN INCHES
 TOLERANCES:
 TWO PLACE DECIMAL ± 0.05
 ANGULAR: MACH $\pm 1^\circ$ BEND $\pm 1^\circ$

MATERIAL

PLA

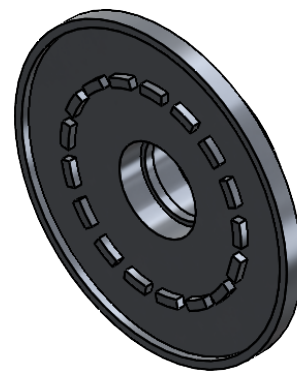
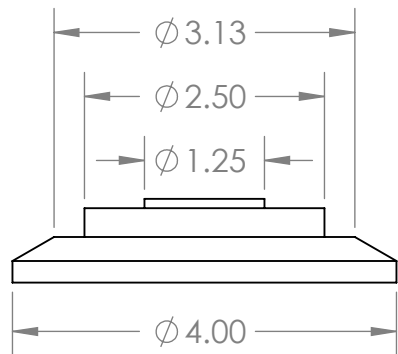
	NAME	DATE	TITLE:	
DRAWN	HPVCP	11/17/21	HE SENSOR MOUNT	
ADVISOR'S APPROVAL			SIZE	DWG. NO.
COMMENTS:			A	P.3 Sensor Mount
			SCALE: 1:2	WEIGHT:
			SHEET 3 OF 16	
			REV	

2

1

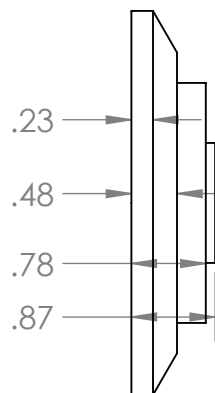
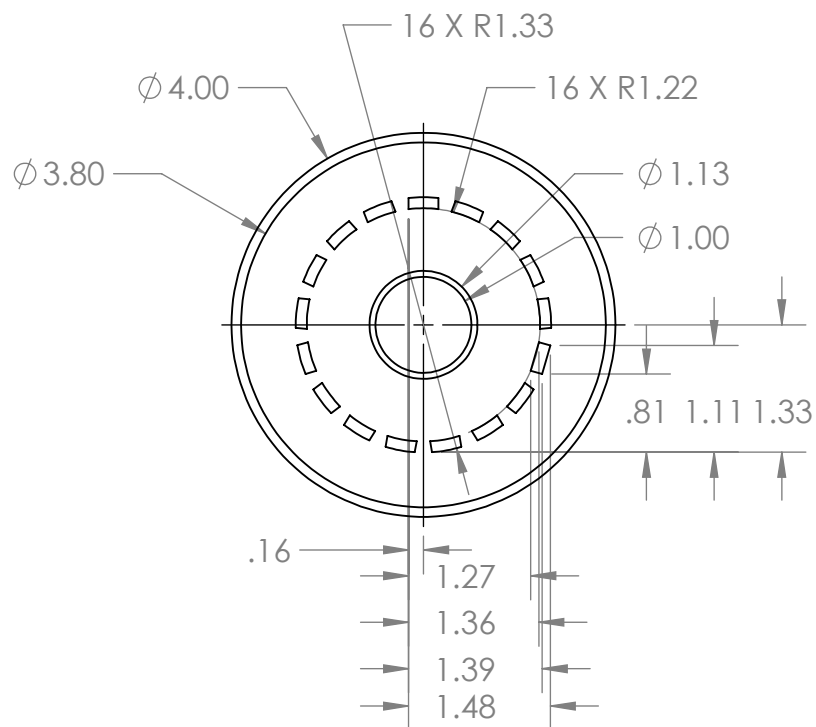
2

1



B

B



A

A

UNLESS OTHERWISE SPECIFIED:
 DIMENSIONS ARE IN INCHES
 TOLERANCES:
 TWO PLACE DECIMAL ± 0.05
 ANGULAR: MACH $\pm 1^\circ$ BEND $\pm 1^\circ$

MATERIAL

PLA

	NAME	DATE	TITLE:	
DRAWN	HPVCP	10/23/21	FRICITION PLATE FIXTURE	
ADVISOR'S APPROVAL			SIZE	DWG. NO.
COMMENTS:			REV	
			A P.4 Plate Fixture	
SCALE: 1:2		WEIGHT:	SHEET 4 OF 16	

2

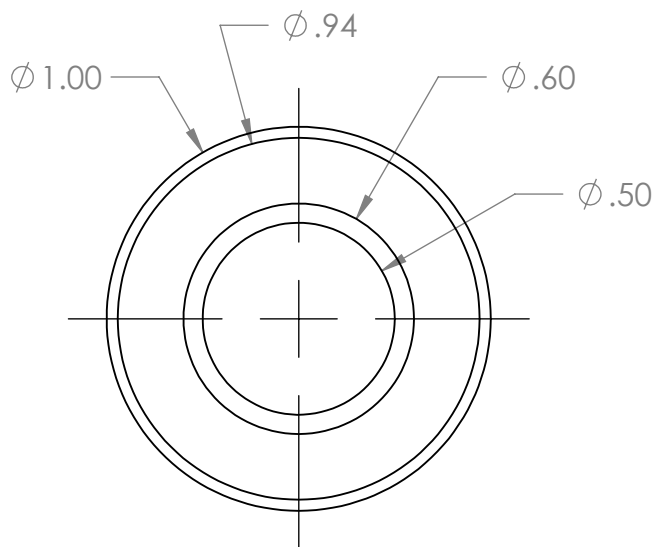
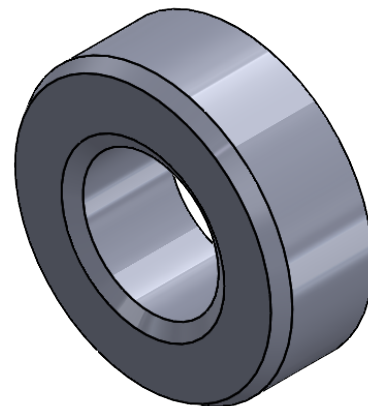
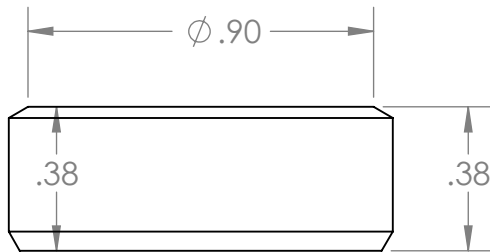
1

2

1

B

B



A

A

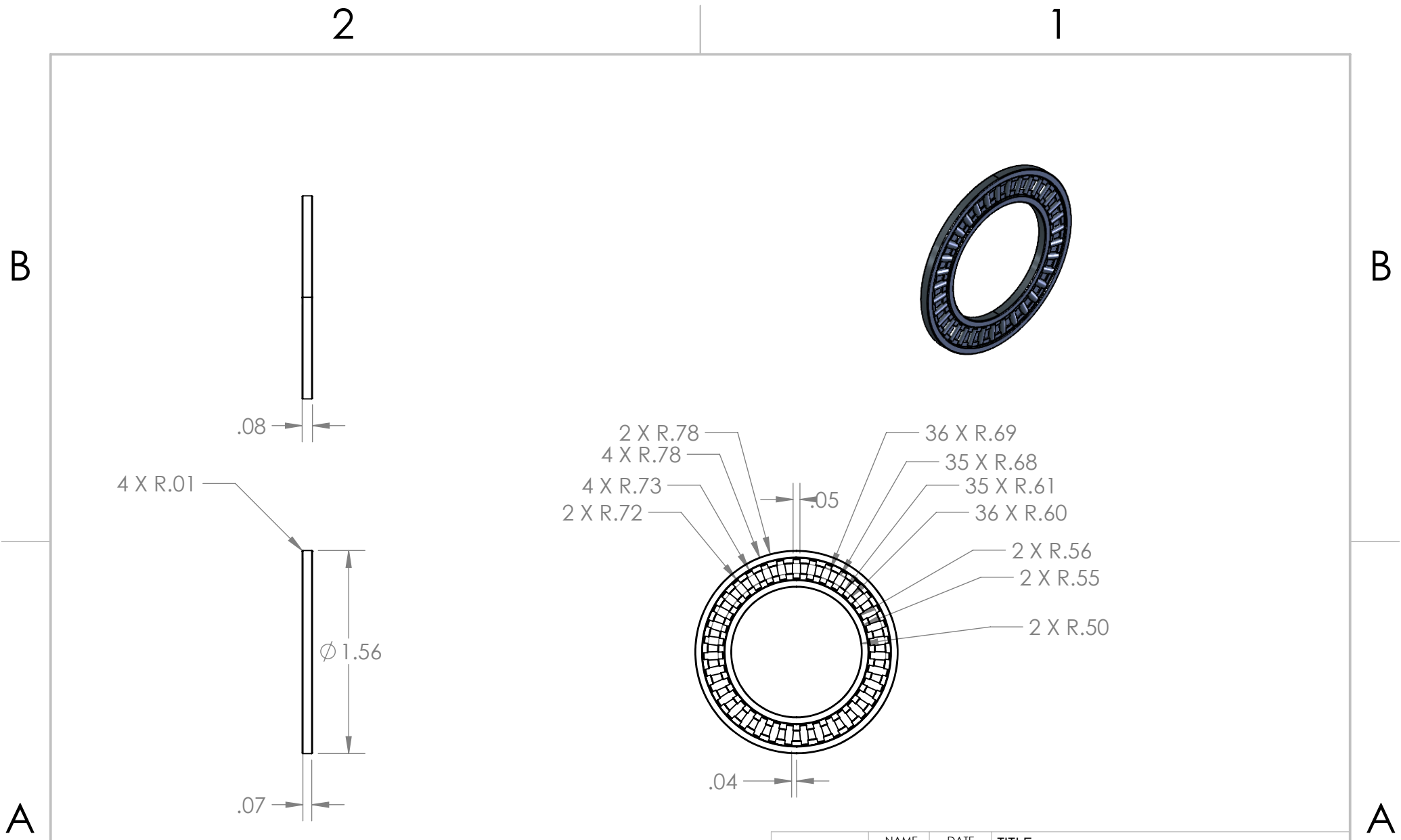
UNLESS OTHERWISE SPECIFIED:
 DIMENSIONS ARE IN INCHES
 TOLERANCES:
 TWO PLACE DECIMAL ± 0.05
 ANGULAR: MACH $\pm 1^\circ$ BEND $\pm 1^\circ$

MATERIAL
 1020 Steel

	NAME	DATE	TITLE:	
DRAWN	HPVCP	10/23/21	Collar	
ADVISOR'S APPROVAL			SIZE	DWG. NO.
COMMENTS:			A	M.1 Collar
			SCALE: 2:1	WEIGHT:
			REV	
			SHEET 5 OF 16	

2

1



UNLESS OTHERWISE SPECIFIED:
 DIMENSIONS ARE IN INCHES
 TOLERANCES:
 TWO PLACE DECIMAL ± 0.05
 ANGULAR: MACH $\pm 1^\circ$ BEND $\pm 1^\circ$

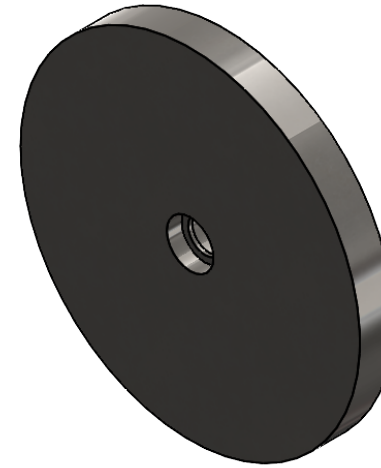
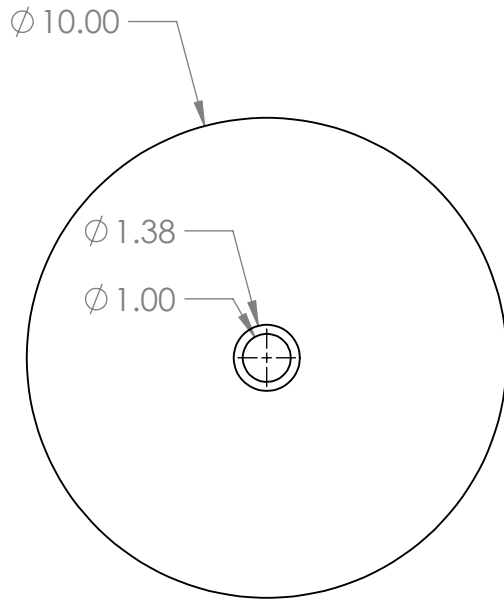
MATERIAL
 Carbon Steel

	NAME	DATE
DRAWN	HPVCP	10/23/21
ADVISOR'S APPROVAL		
COMMENTS:		

TITLE: NEEDLE BEARING		
SIZE	DWG. NO.	REV
A	M.2 Needle Bearing	
SCALE: 1:1	WEIGHT:	SHEET 6 OF 16

2

1



B

B

A

A

UNLESS OTHERWISE SPECIFIED:
 DIMENSIONS ARE IN INCHES
 TOLERANCES:
 TWO PLACE DECIMAL ± 0.05
 ANGULAR: MACH $\pm 1^\circ$ BEND $\pm 1^\circ$

MATERIAL
 Carbon Steel

	NAME	DATE	TITLE:	
DRAWN	HPVCP	10/23/21	FLYWHEEL	
ADVISOR'S APPROVAL			SIZE	DWG. NO.
COMMENTS:			A	M.3 Flywheel
			SCALE: 1:4	WEIGHT:
			SHEET 7 OF 16	

2

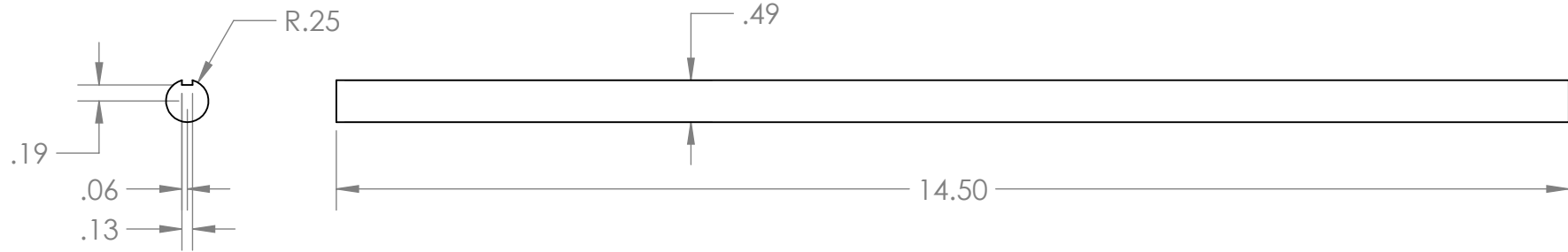
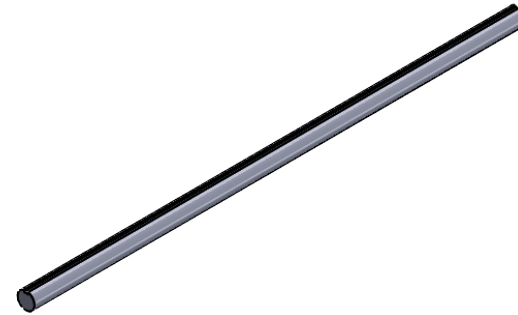
1

2

1

B

B



A

A

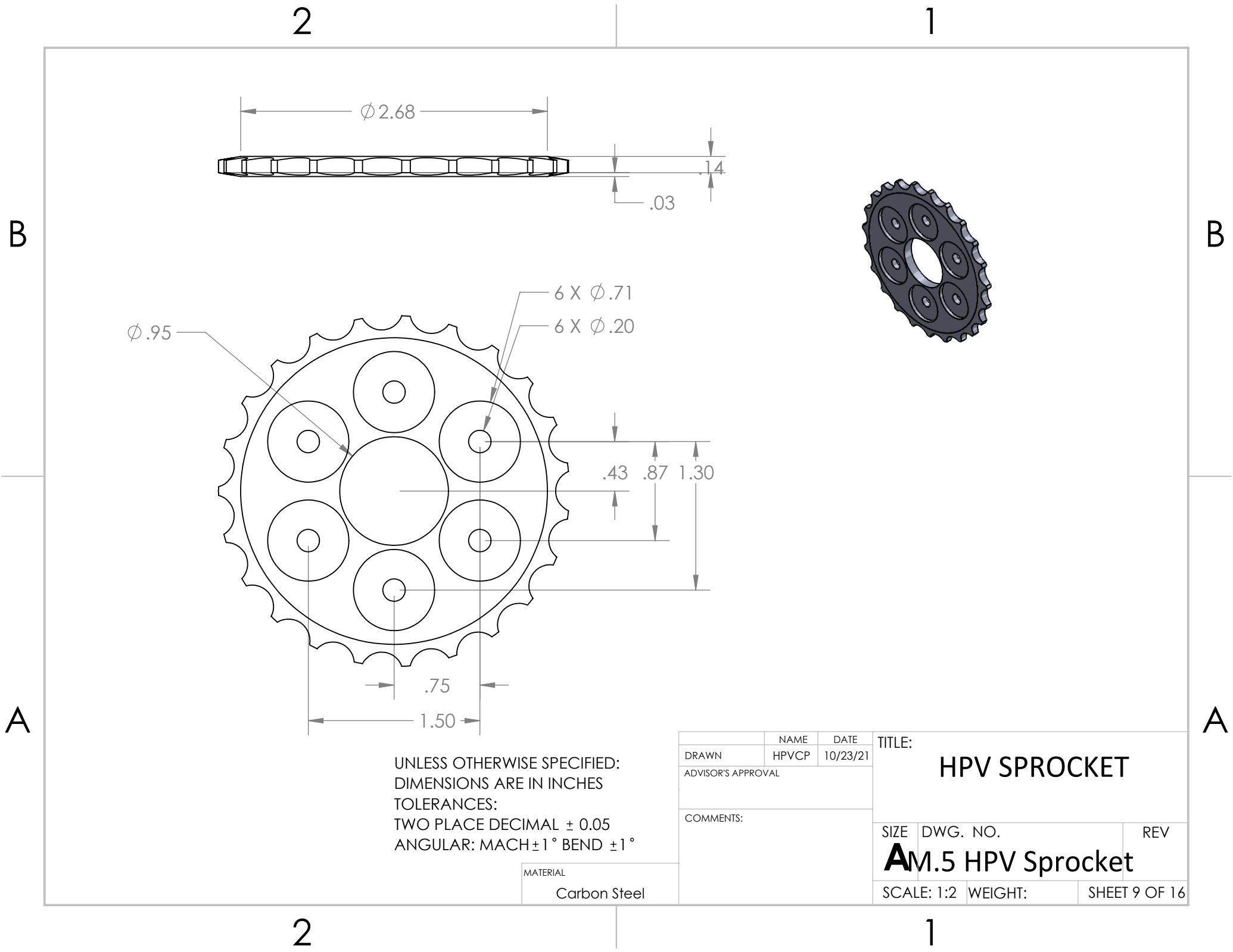
UNLESS OTHERWISE SPECIFIED:
 DIMENSIONS ARE IN INCHES
 TOLERANCES:
 TWO PLACE DECIMAL ± 0.05
 ANGULAR: MACH $\pm 1^\circ$ BEND $\pm 1^\circ$

MATERIAL
 Carbon Steel

	NAME	DATE	TITLE:	
DRAWN	HPVCP	10/23/21	INNER SHAFT	
ADVISOR'S APPROVAL			SIZE	DWG. NO.
COMMENTS:			A	M.4 Inner Shaft
SCALE: 1:2		WEIGHT:	REV	
			SHEET 8 OF 16	

2

1

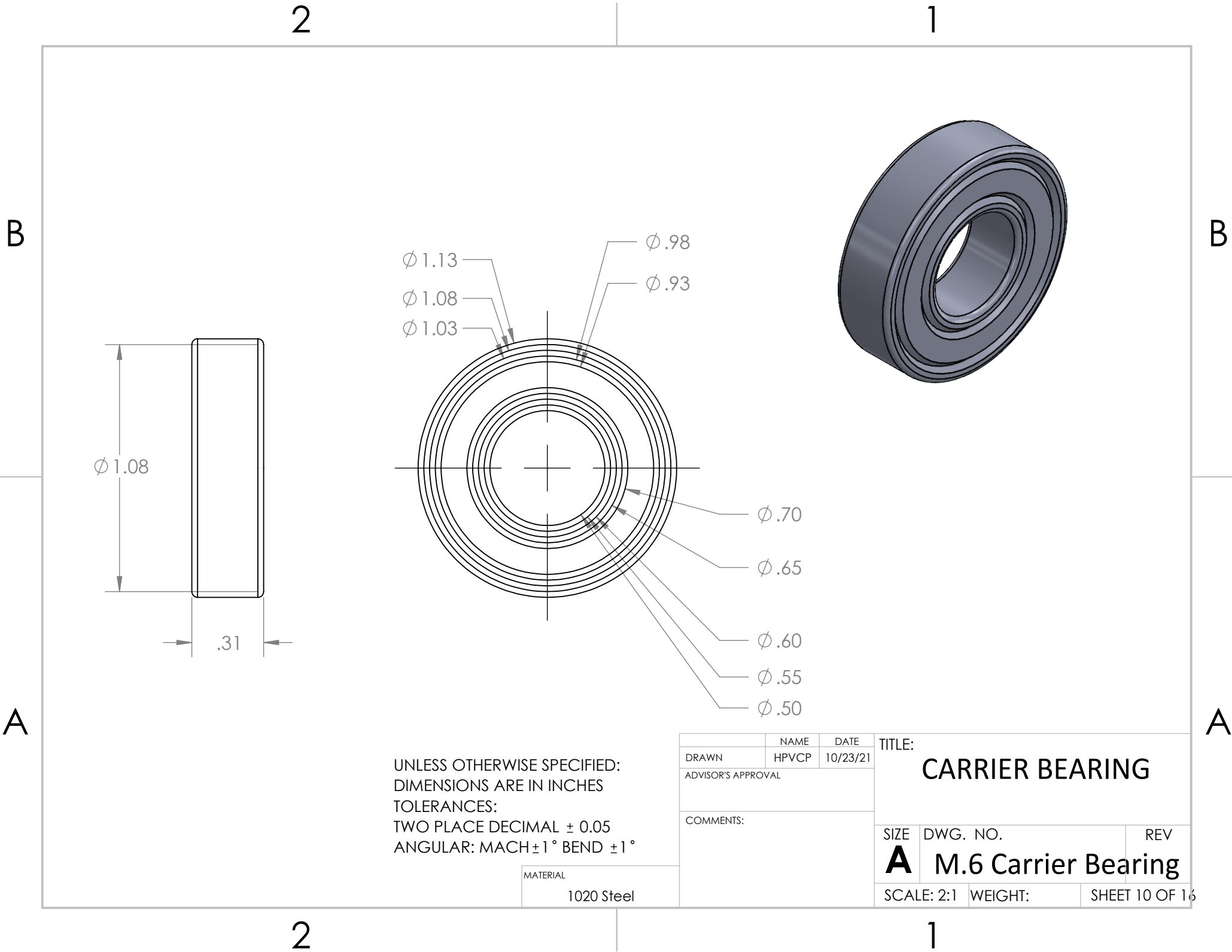


UNLESS OTHERWISE SPECIFIED:
 DIMENSIONS ARE IN INCHES
 TOLERANCES:
 TWO PLACE DECIMAL ± 0.05
 ANGULAR: MACH $\pm 1^\circ$ BEND $\pm 1^\circ$

MATERIAL
 Carbon Steel

	NAME	DATE
DRAWN	HPVCP	10/23/21
ADVISOR'S APPROVAL		
COMMENTS:		

TITLE:		
HPV SPROCKET		
SIZE	DWG. NO.	REV
Am.5 HPV Sprocket		
SCALE: 1:2	WEIGHT:	SHEET 9 OF 16



UNLESS OTHERWISE SPECIFIED:
 DIMENSIONS ARE IN INCHES
 TOLERANCES:
 TWO PLACE DECIMAL ± 0.05
 ANGULAR: MACH $\pm 1^\circ$ BEND $\pm 1^\circ$

MATERIAL
 1020 Steel

	NAME	DATE
DRAWN	HPVCP	10/23/21
ADVISOR'S APPROVAL		
COMMENTS:		

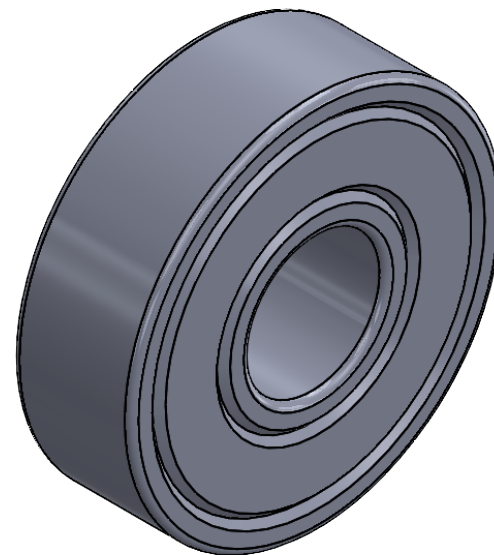
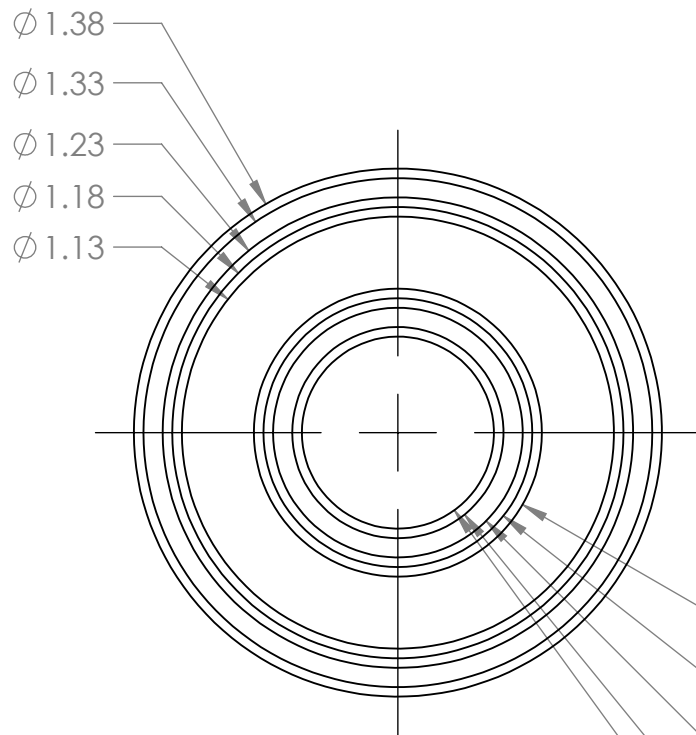
TITLE: CARRIER BEARING		
SIZE	DWG. NO.	REV
A	M.6 Carrier Bearing	
SCALE: 2:1	WEIGHT:	SHEET 10 OF 16

2

1

B

B



- $\phi .75$
- $\phi .70$
- $\phi .65$
- $\phi .55$
- $\phi .50$

A

A

UNLESS OTHERWISE SPECIFIED:
 DIMENSIONS ARE IN INCHES
 TOLERANCES:
 TWO PLACE DECIMAL ± 0.05
 ANGULAR: MACH $\pm 1^\circ$ BEND $\pm 1^\circ$

MATERIAL
 1020 Steel

	NAME	DATE
DRAWN	HPVCP	10/23/21
ADVISOR'S APPROVAL		
COMMENTS:		

TITLE: FLYWHEEL BEARING		
SIZE	DWG. NO.	REV
A	M.7 Flywheel Bearing	
SCALE: 2:1	WEIGHT:	SHEET 11 OF 16

2

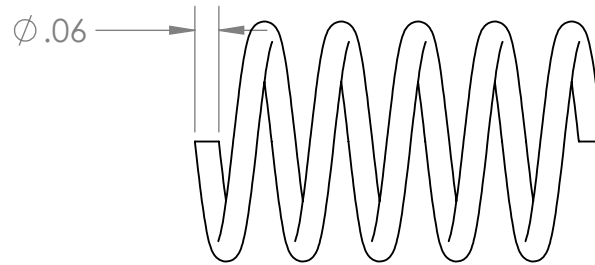
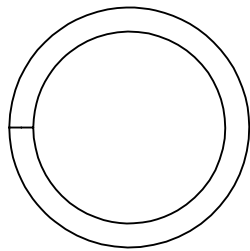
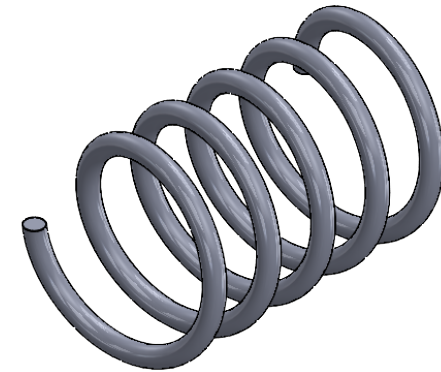
1

2

1

B

B



A

A

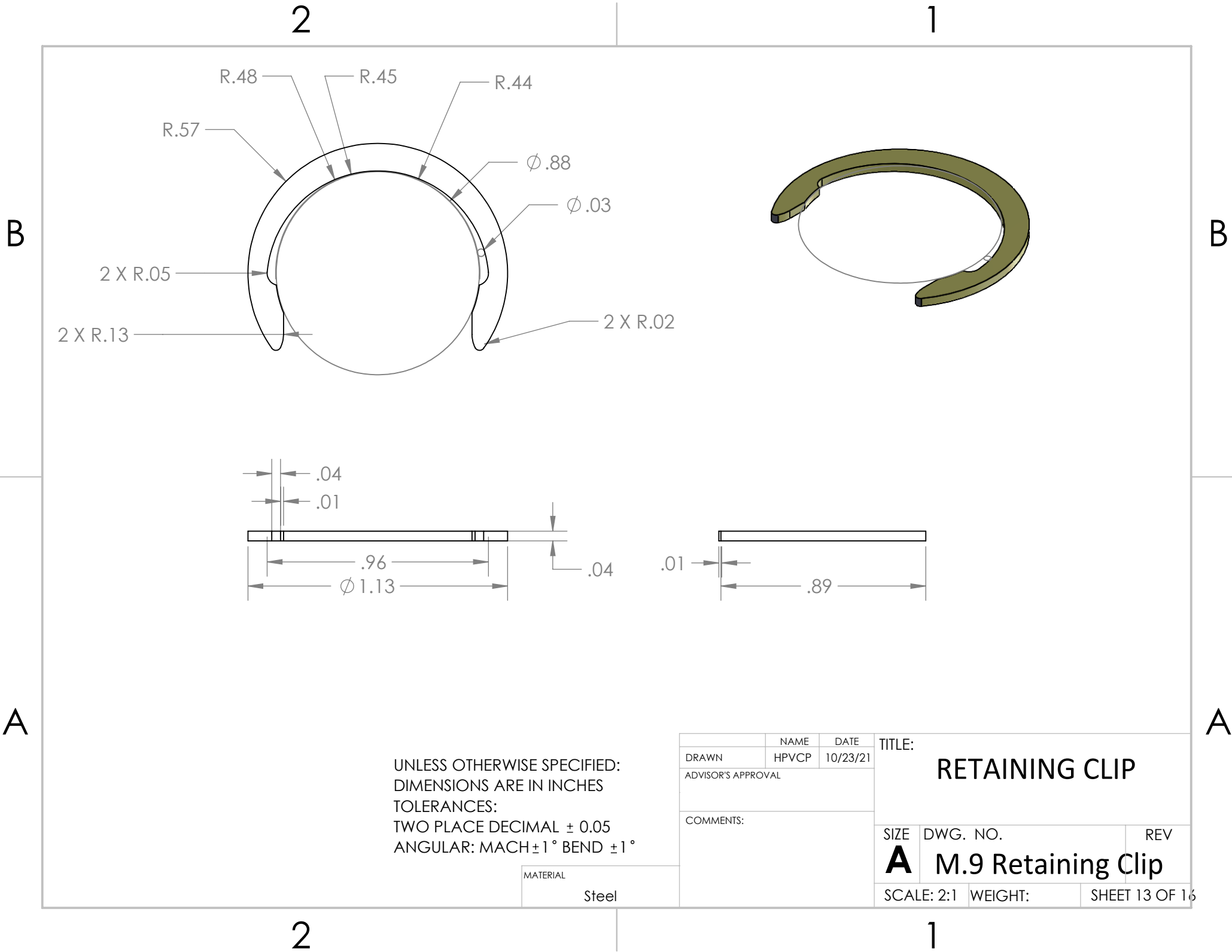
UNLESS OTHERWISE SPECIFIED:
 DIMENSIONS ARE IN INCHES
 TOLERANCES:
 TWO PLACE DECIMAL ± 0.05
 ANGULAR: MACH $\pm 1^\circ$ BEND $\pm 1^\circ$

MATERIAL	Steel
----------	-------

	NAME	DATE	TITLE:	
DRAWN	HPVCP	10/23/21	SPRING	
ADVISOR'S APPROVAL			SIZE	DWG. NO.
COMMENTS:			A	M.8 Spring
			SCALE: 2:1	WEIGHT:
			REV	
			SHEET 12 OF 16	

2

1



UNLESS OTHERWISE SPECIFIED:
 DIMENSIONS ARE IN INCHES
 TOLERANCES:
 TWO PLACE DECIMAL ± 0.05
 ANGULAR: MACH $\pm 1^\circ$ BEND $\pm 1^\circ$

MATERIAL
 Steel

	NAME	DATE
DRAWN	HPVCP	10/23/21
ADVISOR'S APPROVAL		
COMMENTS:		

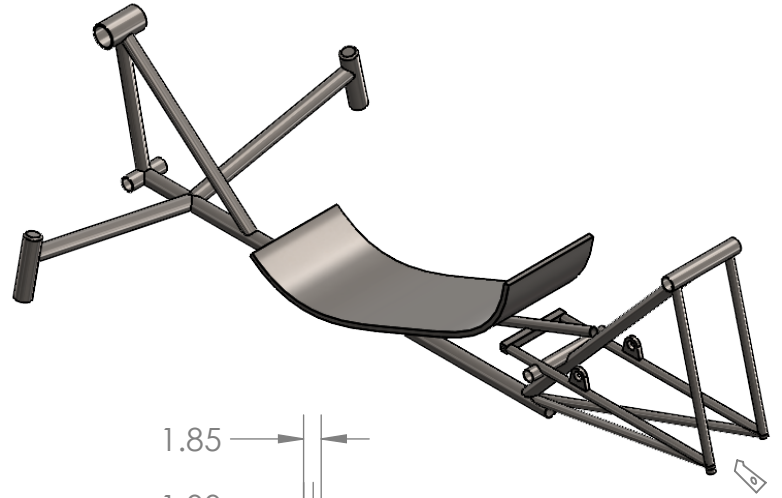
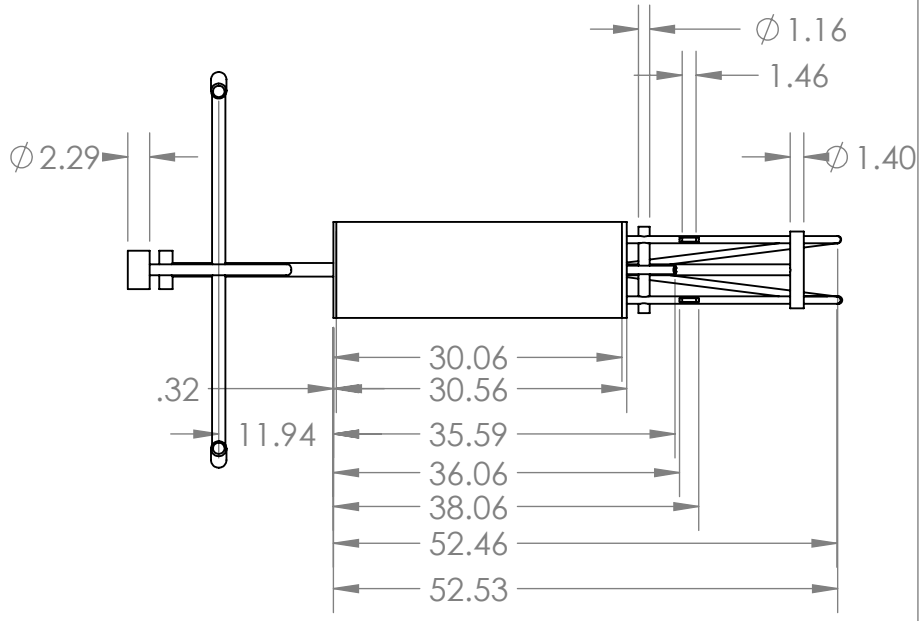
TITLE: RETAINING CLIP		
SIZE	DWG. NO.	REV
A	M.9 Retaining Clip	
SCALE: 2:1	WEIGHT:	SHEET 13 OF 16

2

1

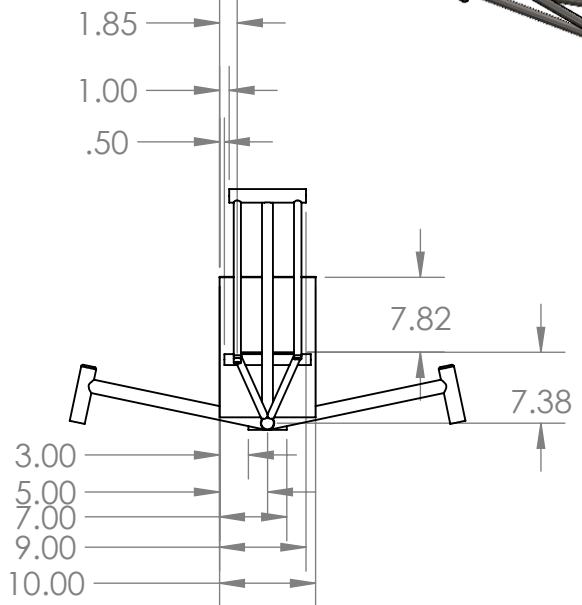
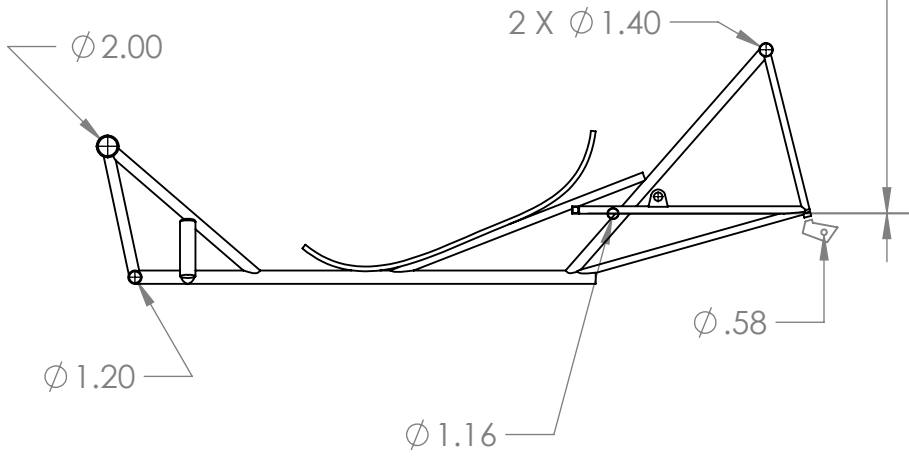
B

B



A

A



MATERIAL
Steel

	NAME	DATE
DRAWN	HPVCP	9/23/21
ADVISOR'S APPROVAL		

COMMENTS:

TITLE:		
FRAME		
SIZE	DWG. NO.	REV
A	B.1 Frame	
SCALE: 1:24 WEIGHT:		SHEET 14 OF 16

2

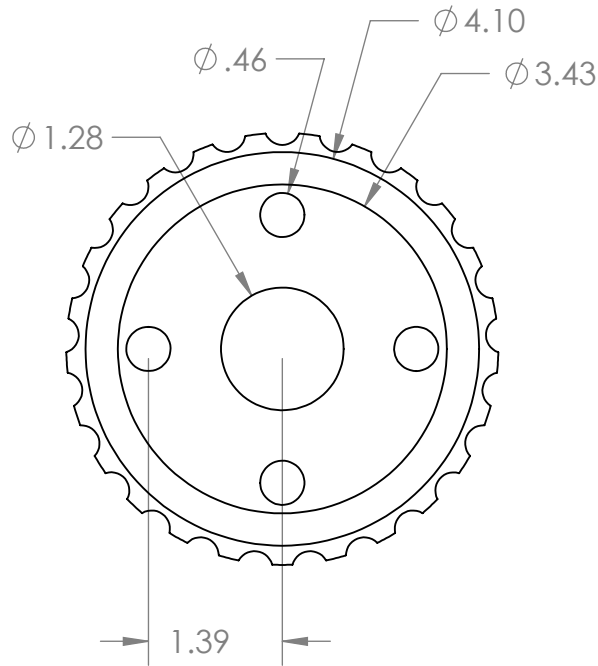
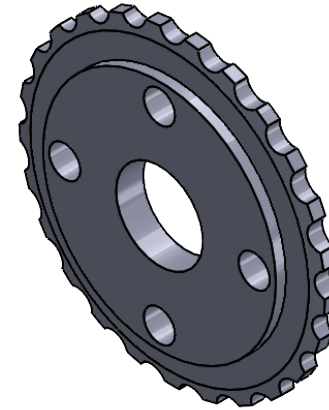
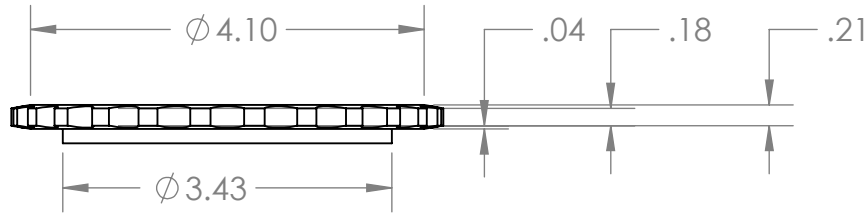
1

2

1

B

B



A

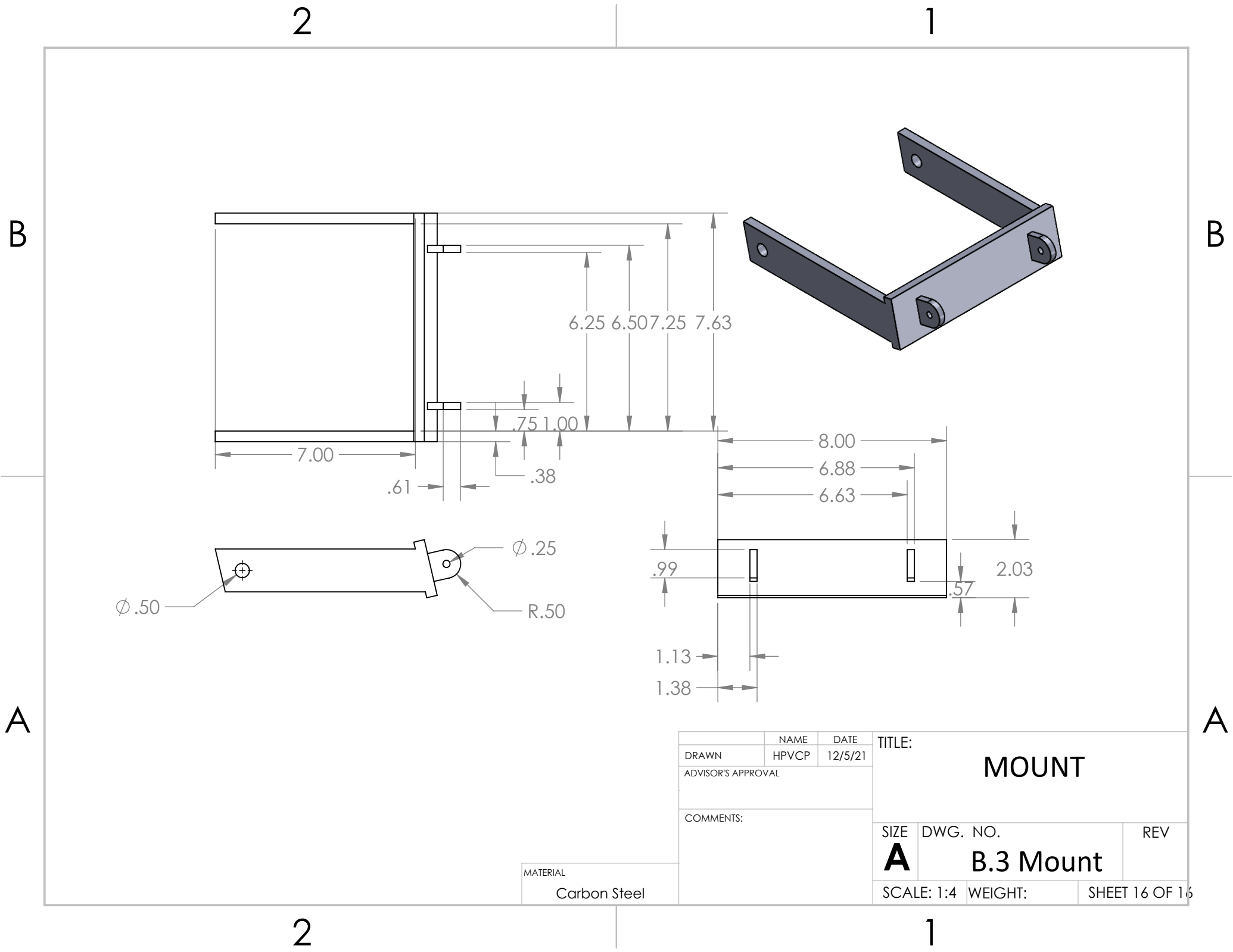
A

	NAME	DATE	TITLE:	
DRAWN	HPVCP	12/5/21	SPROCKET SMALL	
ADVISOR'S APPROVAL			SIZE	DWG. NO.
COMMENTS:			REV	
			A B.2 Sprocket small	
SCALE: 1:2		WEIGHT:	SHEET 15 OF 16	

MATERIAL
Carbon Steel

2

1



	NAME	DATE	TITLE: MOUNT									
DRAWN	HPVCP	12/5/21										
ADVISOR'S APPROVAL												
COMMENTS:			<table border="1"> <tr> <td>SIZE</td> <td>DWG. NO.</td> <td>REV</td> </tr> <tr> <td>A</td> <td>B.3 Mount</td> <td></td> </tr> <tr> <td>SCALE: 1:4</td> <td>WEIGHT:</td> <td>SHEET 16 OF 16</td> </tr> </table>	SIZE	DWG. NO.	REV	A	B.3 Mount		SCALE: 1:4	WEIGHT:	SHEET 16 OF 16
SIZE	DWG. NO.	REV										
A	B.3 Mount											
SCALE: 1:4	WEIGHT:	SHEET 16 OF 16										
MATERIAL Carbon Steel												